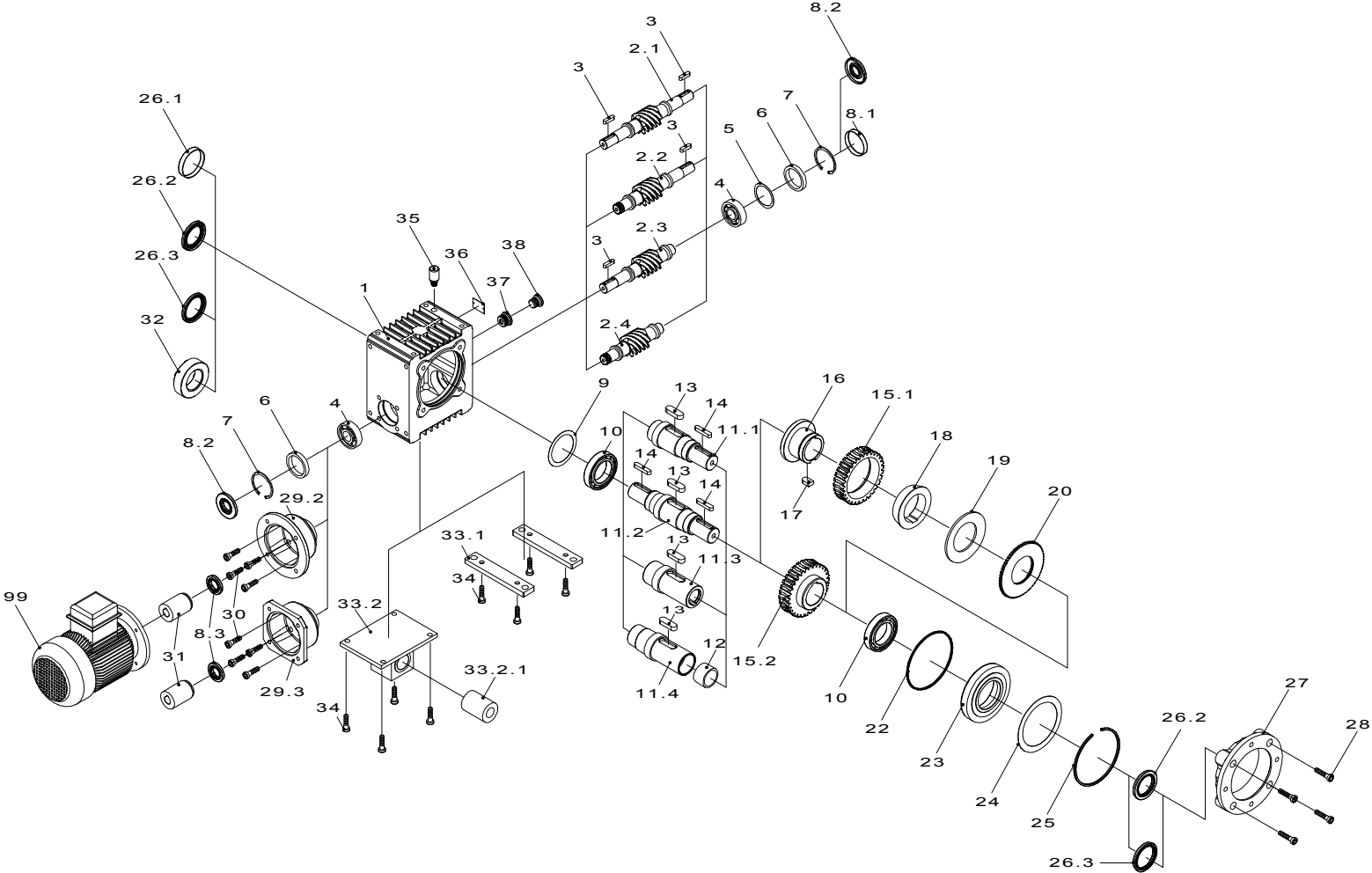


Gear size E,M 063



ANTRIEBS SYSTEME



position	naming	designation
1	gear case	
2.1	double sided worm shaft	
2.2	double sided worm shaft for motor	
2.3	single sided worm shaft	
2.4	single sided worm shaft for motor	
3	key A 6x6x25	
4	angular ball bearing 7304BEP	
5	shim set 42x52x0,1-0,3	
6	supporting disk 42x52x2,5	
7	circlip DIN472 52x3	
8.1	cover 52x6,5	
8.2	radial seal 20x52x8	
8.3	radial seal 20x40x7	
9	shim set 60x75x0,1-0,3	
10	ball bearing 6009	
11.1	single sided output shaft	
11.2	double sided output shaft	
11.3	hollow shaft	
11.4	hollow shaft for shrink disc	
12	slide bush	
13	key A 14x9x40	
14	key A 8x7x50	
15.1	wormwheel for safety friction clutch	
15.2	wormwheel	
16	coupling hub	
17	key 14x6x16	
18	cone ring	
19	spring disc	
20	set collar	
22	o-ring 110x2	
23	gear case cover	
24	shim set 90x110x0,1-0,3	
25	snap ring	
26.1	cover 55x9	to 30.06.1993
26.1	cover 62x8	from 01.01.1993
26.2	radial seal 40x55x8	to 30.06.1993
26.2	radial seal 40x62x6	from 01.01.1993
26.3	radial seal 45x55x7	to 30.06.1993
26.3	radial seal 45x62x7	from 01.01.1993
27	housing flange f	
28	socket head screw M8x35 8.8	
29.2	motor flange	
29.3	servomotor flange	
30	socket head screw M8x25 8.8	
31	coupling	
32	shrink disc	
33.1	gear foot	
33.2	torque arm	
33.2.1	rubber buffer HL 45x20x62.5	
34	socket head screw M8x16 8.8	
35	vent filter	
36	information plate	
37	drain plug	
38	drain plug R 1/2"	
99	motor (acc. to spezication)	