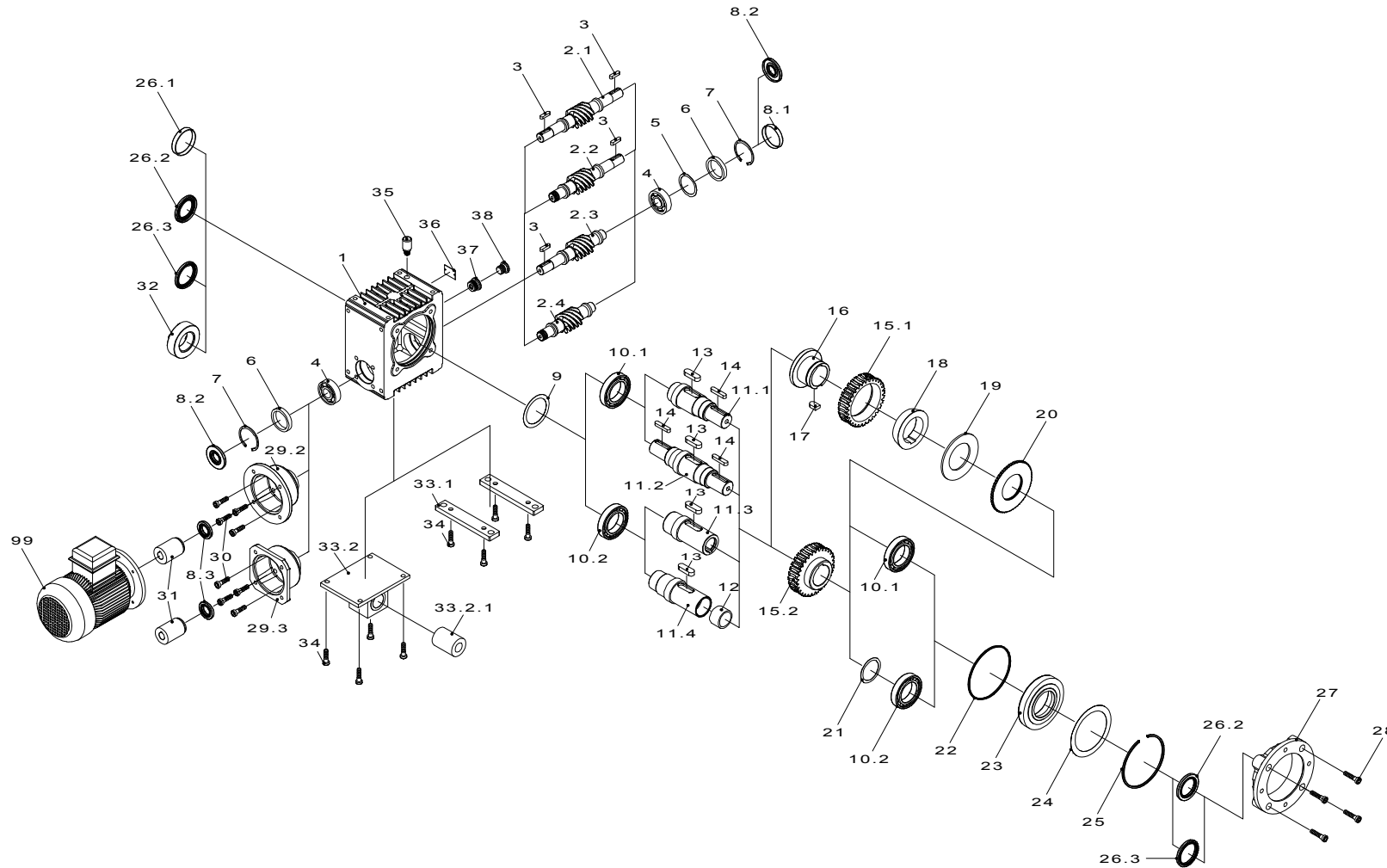


Gear size E,M 080



| position | naming | designation |
|----------|--------------------------------------|-------------|
| 1 | gear case | |
| 2.1 | double sided worm shaft | |
| 2.2 | double sided worm shaft for motor | |
| 2.3 | single sided worm shaft | |
| 2.4 | single sided worm shaft for motor | |
| 3 | key A 8x7x32 | |
| 4 | angular ball bearing 7305B | |
| 5 | shim set 50x62x0,1-0,3 | |
| 6 | supporting disk 50x62x3 | |
| 7 | circlip DIN472 62x3 | |
| 8.1 | cover 62x8 | |
| 8.2 | radial seal 25x62x7 | |
| 8.3 | radial seal 25x47x7 | |
| 9 | shim set 70x90x0,1-0,3 | |
| 10.1 | ball bearing 6210 | |
| 10.2 | ball bearing 6011 | |
| 11.1 | single sided output shaft | |
| 11.2 | double sided output shaft | |
| 11.3 | hollow shaft | |
| 11.4 | hollow shaft for shrink disc | |
| 12 | slide bush | |
| 13 | key A 16x10x50 | |
| 14 | key A 10x8x50 | |
| 15.1 | wormwheel for safety friction clutch | |
| 15.2 | wormwheel | |
| 16 | coupling hub | |
| 17 | key 16x10x26 | |
| 18 | cone ring | |
| 19 | spring disc | |
| 20 | set collar | |
| 21 | shim 55x68x1 | |
| 22 | o-ring 140x3 | |
| 23 | gear case cover | |
| 24 | shim set 110x140x0,1-0,3 | |
| 25 | snap ring | |
| 26.1 | cover 72x9 | |
| 26.2 | radial seal 48x72x7 | |
| 26.3 | radial seal 55x72x7 | |
| 27 | housing flange f | |
| 28 | socket head screw M10x30 8.8 | |
| 29.2 | motor flange | |
| 29.3 | servomotor flange | |
| 30 | socket head screw M10x25 8.8 | |
| 31 | coupling | |
| 32 | shrink disc | |
| 33.1 | gear foot | |
| 33.2 | torque arm | |
| 33.2.1 | rubber buffer HL 50x25x67.5 | |
| 34 | socket head screw M10x20 8.8 | |
| 35 | vent filter | |
| 36 | information plate | |
| 37 | drain plug | |
| 38 | drain plug R 1/2" | |
| 99 | motor (acc. to spezication) | |